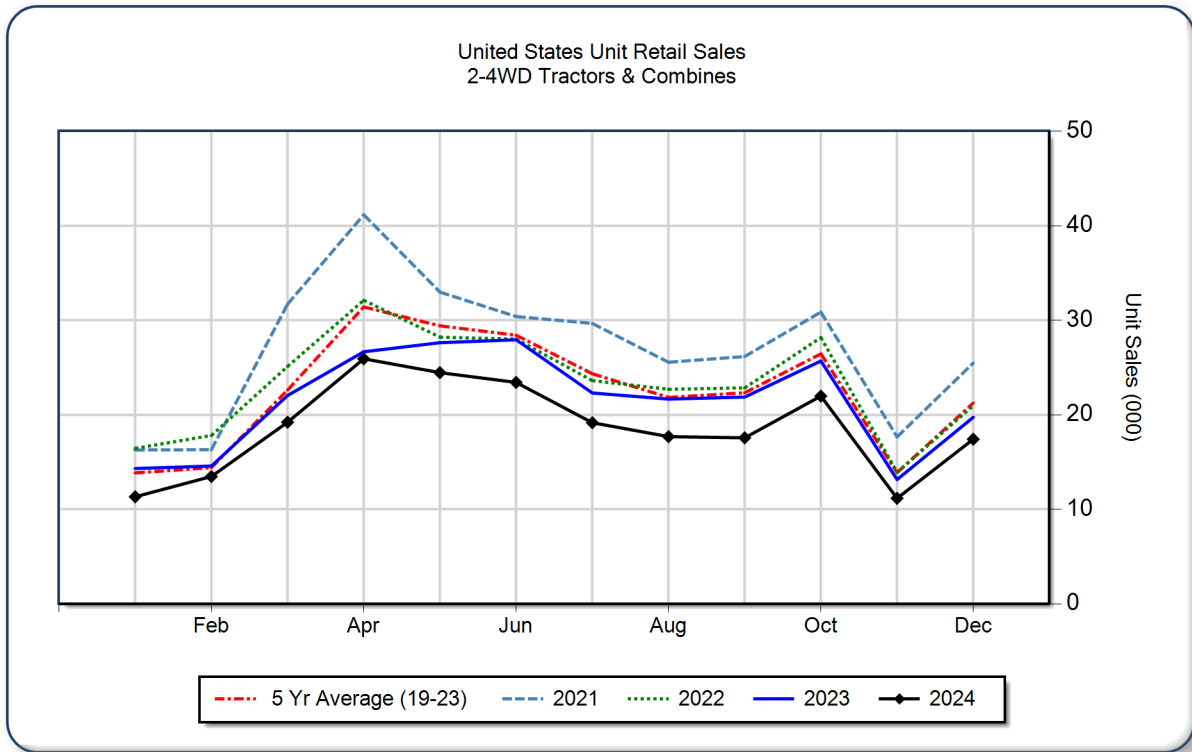


**AEM United States Ag Tractor and Combine Report
 December 2024**

Copyright, AEM. All rights reserved. If data is referenced, please acknowledge AEM as the source.

	December			YTD - December			Beginning Inventory Dec 2024
	2024	2023	%Chg	2024	2023	%Chg	
2WD Farm Tractors							
< 40 HP	9,243	9,989	-7.5	134,911	156,805	-14.0	76,272
40 < 100 HP	5,276	5,797	-9.0	55,067	61,143	-9.9	33,897
100+ HP	2,093	2,852	-26.6	22,864	27,708	-17.5	10,714
Total 2WD Farm Tractors	16,612	18,638	-10.9	212,842	245,656	-13.4	120,883
4WD Farm Tractors	358	494	-27.5	4,358	4,562	-4.5	840
Total Farm Tractors	16,970	19,132	-11.3	217,200	250,218	-13.2	121,723
Self-Prop Combines	444	603	-26.4	5,564	7,349	-24.3	1,079



The AEM Ag Tractor and Combine Report is provided monthly and is derived from AEM member companies through proprietary statistical reporting programs. The data is provided by AEM members and represents preliminary monthly retail sales of Ag equipment. Separate reports are available for the U.S., Canada and Russia. For more information, please visit: <https://www.aem.org/market-share-statistics/us-ag-tractor-and-combine-reports>. **Attention Media:** To speak with an AEM spokesperson about the data, please contact Sandra Mason at smason@aem.org.